



42 Bohuns Lane Mongans Bridge VIC

4 🏠 2 🚗 2 🚗

This is the perfect opportunity to secure an extremely rare rural lifestyle property located in the highly sought-after Kiewa Valley area. This family homestead is set upon 41.34 HA or 102.15 acres (approx.) of picturesque land with views of the Victorian alps, Falls Creek, Mount Bogong, Mount Big Ben, and a short walk to the Kiewa River. You really need to inspect this property to appreciate the serenity it provides.

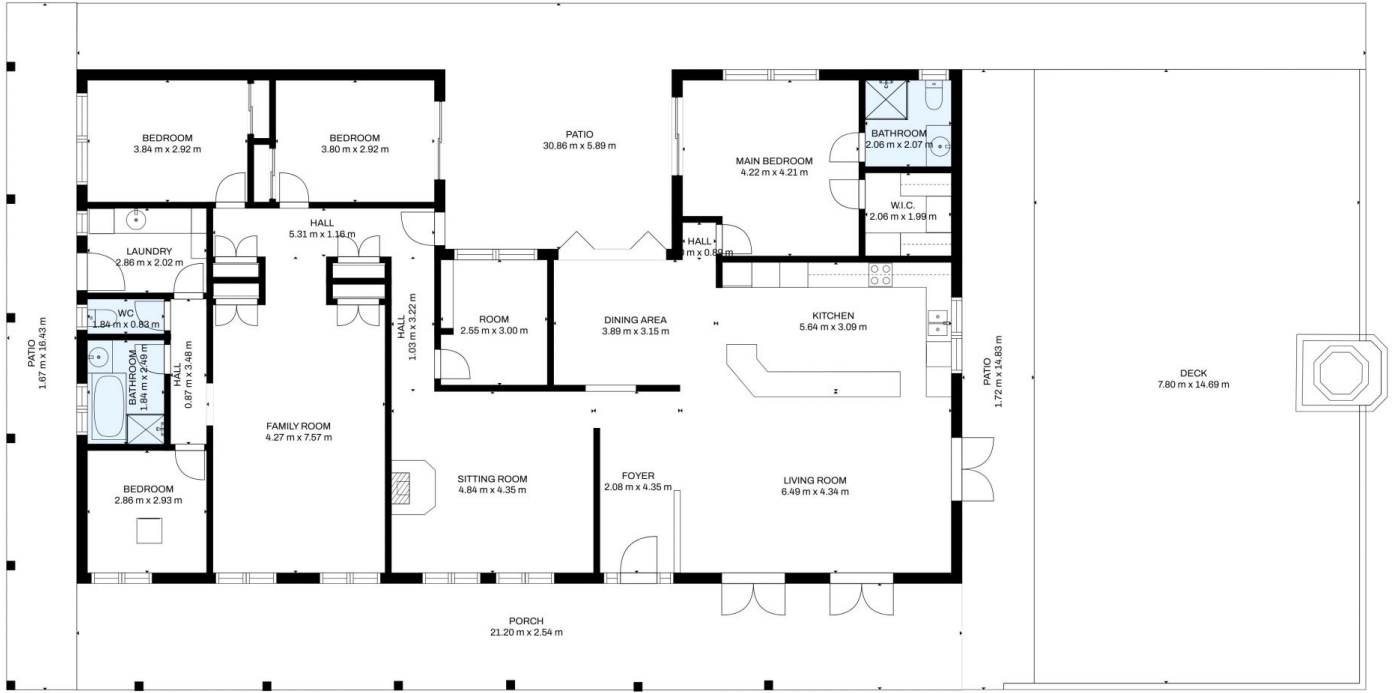
Land Size : 41.34 ha
View : <https://www.kanerealestate.com.au/sale/vic/north-eastern/mongans-bridge/residential/acragesemirural/7245847>

The four bedrooms plus study family homestead, has plenty of room for the growing family with 3 living spaces and a 7.8m x 14.69m (approx.) entertaining deck which has been built to capture the amazing views of the mountains.



Cameron Brooks
0260400224

Situated in the beautiful Kiewa Valley area, which is 15 minutes to Mount Beauty, 45 minutes to Wodonga, Bright & the ski fields, 30 minutes to the Hume Weir and has a bus



Total scanned area: 532 m²

MEASUREMENTS ARE CALCULATED BY CUBICASA TECHNOLOGY. DEEMED HIGHLY RELIABLE BUT NOT GUARANTEED.